

April 20, 2011
10:00 am – 2:00 pm

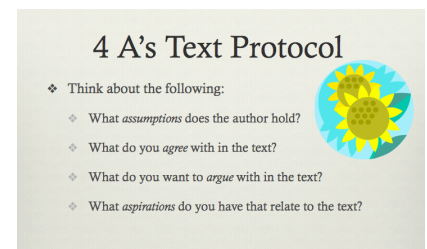
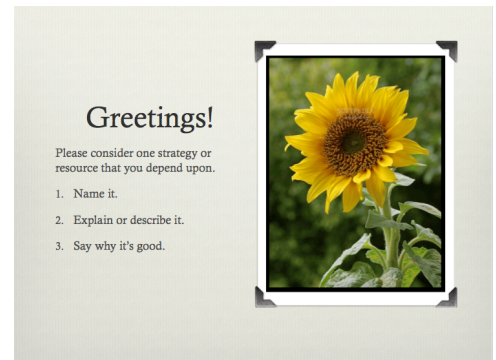
Staybridge Suites
Lincoln, NE

Present:

Mark Anderson (York), Salome' Ausin-Dodge (Beatrice), Jessica Marsh (Crete), Peter Lyness (Milford), Kyla Petersen (Dorchester), Jacque Kuzma (Crete), Kim Brehm (York), Janet Burger (Wilber-Clatonia), Nelli Martinez (Wilber-Clatonia School), Lisa Weber (Johnson County Central), Ruth Merrett (Norris), Joan Stutesman (Lewiston), Sue Heine (Wahoo), Paula Conrad (Wahoo), Pam Trutna (Wahoo), Mary Ann Mattingly (David City), Kathy Brunt (Columbus Lakeview), Annette Barcel (Columbus Lakeview), Pamela Mlliken (Logan View), Nancy Roberts (Logan View), Jen Madison (ESU 6), Deb Wragge (ESU 7)

10:00 Welcome

- Members present introduced themselves and shared one valuable resource or strategy they find especially valuable. They were asked to name the strategy, explain or describe it, and say why it's good. Many good ideas and resources were shared! Participants' notes were compiled and posted at esu6ell.wikispaces.com (ELL Network). Please download the resulting file for details. Several notable conversations ensued through this sharing.
 - Language for Learning* (as well as *Language for Thinking and Reasoning and Writing*) are being used in several districts. Jen and Deb encouraged groups to pursue training opportunities to ensure effective and efficient use of this program, including follow-up and fidelity checks. April Kelley (ESU 6 Reading Consultant) has provided some training and may be an option. She is offering a direct instruction training for paras and substitutes on August 9 as well. Please find more information at www.esu6.org.
 - Using images was an important strategy offered by several participants. Most rely on the Internet to find images. Jen suggested that one task of this group might be to create a repository of images. Jen and Deb will pursue this opportunity.
- Article Study:
 - Through lunch, each participant was asked to read one of two articles pertaining to ELL instruction:
 - Kieffer, M.J. and Lesaux, N.K. (September 2010). "Morphing into adolescents: Active word learning for English-Language learners and their classmates in middle school. *Journal of adolescent & adult literacy*. 54(1), 47-56.
 - Ogle, D. and Correa-Kovtun, A. (April 2010). "Supporting English language learners and struggling readers in the content literacy with the 'partner reading and content, too' routine." *The reading teacher*. 63(7), 532-542.
 - Participants made notes as they read according to the "4 A's Text Protocol" and discussed their reflections with others who read the same article.
- Since ESU 7 already completed their needs assessment, Jen elected to follow-up later with ESU 6 consortium districts regarding our needs assessment for 2011-12.



- Terri Schuster Nancy Rowch of NDE could not attend this session; however, they provided a handout several important items regarding ELDA and other Title III updates. Please see the NDE Notes document for details. The following topics were discussed:
 - Rule 15 (rule for provision of services to ELLs in Nebraska)
 - ELL/Bilingual Certification revisions
 - ELDA updates
 - *Classroom Instruction that Works with ELLs* (see list of Nebraska certified trainers)
 - ELL Guidelines
 - LEP/Poverty Plans
 - NeSA
 - Schools did use the resources on approved accommodations, though in some cases, these were most used by district assessment coordinators rather than classroom teachers.
 - Several members of the group expressed frustration in the amount of human resources necessary to provide appropriate accommodations (specifically reading items to students). They suggested NDE provided audio to accompany the online version and/or paper-pencil version.
 - Participants also advocated that the option of paper/pencil tests for ELLs be continued.
- The group discussed the difficulty of obtaining ELDA scores (and other related data) for students newly enrolled in their districts. Many attempt to call the student's previous district, but too often they never receive the information in a timely enough manner to avoid further time-consuming assessment. Jen will ask NDE if a more efficient means of obtaining this data is possible.
 - One district has a special information sheet or file (of a particular color) for each ELL. This goes into the student's cumulative file. This seems to help with organization and quick retrieval of needed information.
 - *(Note added 5.9.11: Due to FERPA restrictions, Nancy Rowch advised not to expect changes in obtaining data. Districts should continue to contact the student's previous district to obtain ELDA and other ELL related information.)*
- Lisa Weber of Johnson County Central shared her use of Pulse Pens with the group. She uses the technology to reinforce pronunciation and vocabulary understanding for target words by creating "talking dots." She also has used this to help ELLs with class presentations by allowing them to practice and record their presentation. Lisa also provided a sample copy of Easy English News to each participant and explained how she uses it. Thanks, Lisa!
- Participants were encouraged to attend a summer training: Bonnie Davis, June 20-22 in Columbus. Please see the flyer for details. Registration fees and related expenses are Title III allowable! This promises to be a valuable experience for attendees!
- ESU 6 is offering a workshop on June 28 based on Marzano's book: *Teaching Basic and Advanced Vocabulary*. The target audience is ELL teachers and general education teachers who work with ELLs; however, the content is appropriate for all teachers. Again, this is a Title III appropriate professional development opportunity; fees and expenses will be covered for Title III consortium schools.
- Each district and ESU receiving funds from any of the NCLB formula grants will be monitored at least once every three years. ESU 6 had a monitoring visit in the fall of 2010. We came out quite well; though we were required to collect and submit each member district's exit criteria. At that time, Jen notified some districts that local exit criteria might merit revision; however, because the impending Rule 15 is likely to standardize exit criteria, Jen suggested that districts wait. Districts should, however, be prepared for their own monitoring visits. Go to this link to download the monitoring guide checklist: <http://www.education.ne.gov/federalprograms/nclbdocuments.htm>. (The Title III section begins on page 39.)
- Participants were reminded that Title III funding restrictions do not allow for further purchase of IPT materials, we will continue to loan existing materials, but schools should plan for this expense. ESUs 6 and 7 will share materials to the extent possible.
- Through 2009-2010, the ESU 6 Title III Consortium purchased 35 User licenses for Rosetta Stone Online, Version 3, a computer-based supplementary program for language learning. This subscription is about to expire. Rosetta Stone has changed its licensing options. To keep our same set up, we would have to purchase 50 licenses, several more than would likely be used. Several participants noted the effectiveness of Rosetta Stone as a supplementary tool. Deb and Jen will discuss cost effective solutions.

- (Note added 5.9.11: ESU 6 Title III Consortium purchased the minimum 50 user license with verbal agreement from ESU 7 Title III Consortium to divide the licenses and expenses.)
- Representatives from Nebraska Wesleyan shared their intent to apply for a federal grant, for which they would like to partner with the ESU 6 and 7 Title III Consortia. Though their primary partner is Lincoln Public Schools, our personnel would be invited to participate in limited quantities (perhaps up to 10 participants from the ESU 6 and 7 consortia districts). Essentially, NWU will offer an ELL endorsement (not a master's degree) for ELL through NWU's Advantage program. Most likely, the participants involved would be required to meet weekly in the evenings (4:30 – 8:30 or so) for approximately four semesters and each day for three weeks during a summer in addition to some online or distance learning sessions. The grant would pay for tuition. All details are still being drafted by NWU and LPS. Jen and Deb will pursue this opportunity with NWU.
- Jen shared several items specific to the ESU 6 Title III Consortium:
 - The esu6ell.wikispaces.com is the primary online means for information sharing (including consortium documents, online resources, and other useful information).
 - Title III funds were used to purchase 5 iPods for loan to consortium districts to use with ELLs. Jen is still working out the logistics of how to sync and purchase apps. She will provide information as soon as possible. Meanwhile, please let her know if you are interested in this tool.
 - Jen reported that we have significant carryover from 2009-2010 that must be spent by early fall. She encouraged districts to submit requests for reimbursement and reminded everyone that expenses related to attending ELL Networks is allowable. (She sent simplified mileage forms to participants of the October and April networks via email.) Participants were also encouraged to consider projects and expenses incurred (or for next year) that could be applied according to the federal guidelines.
 - REMINDER:
 - One of the requirements for use of Title III funding is that the grant should be used only to supplement ELL programming rather than supplant what school districts are required to provide under other statutes. Often, this must be determined on a case-specific basis; however, states recently received additional guidance. We thought you might be interested in the notes from that webinar: [Use of Title III Funds July 21 webinar.pdf](#) (linked from the wiki). Essentially, an LEA (Local Education Agency) may only use Title III funds for services above/beyond what is required under State or local laws or other Federal laws. Often, expenditures must be reviewed on a case-by-case basis, and Jen advised members to call her or Nancy Rowch with case specific questions. However, a few questions can guide us through most cases:
 - What is the instructional program/service provided to all students?
 - What services are required by other federal, state, local, and federal funds?
 - Was the program/service previously provided with state, local, and federal funds?
 - To request reimbursement or payment for approved uses of Title III funds, please use the [Request for Reimbursement](#) form (available on the wiki). This is a template that can be printed or emailed directly to the ESU 6 Grants Manager.
 - In order to request reimbursement or payment for salaries/stipends, a completed Time & Effort Log is required to document the time and activities paid with Title III funds. You may use these or similar district forms (accessible on the wiki). Please make certain that completed forms are signed and returned to ESU 6 promptly to ensure payment.

Proposed ELL Network dates for 2011-12: *These are subject to change! Final dates will be announced in the fall.*

- September 28, 2011 (ESU 6)
- February 8, 2012 (Fremont or ESU 7 location, TBD)
- April 24, 2012 (Lincoln, TBD)

2:00 pm

Meeting Adjourned